

## HOOKSTICK SWITCH – HS17750

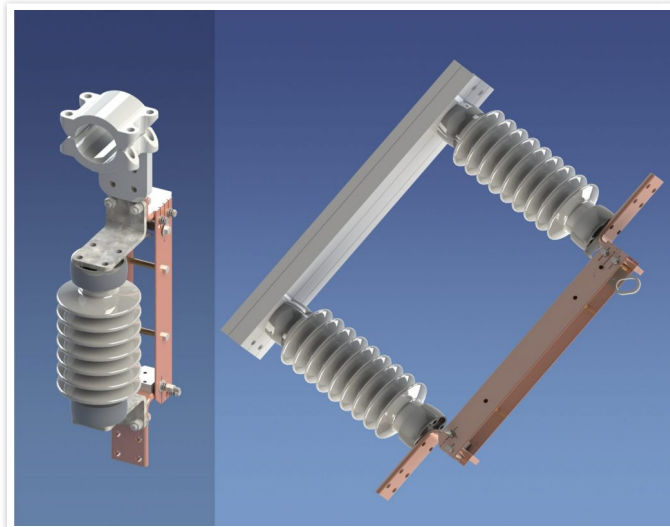
### Robust & Reliable

The HS17750 is a simple, robust and very reliable station class hookstick switch.

All parts are machined from solid billet materials, such as 304 stainless steel and hard drawn copper.

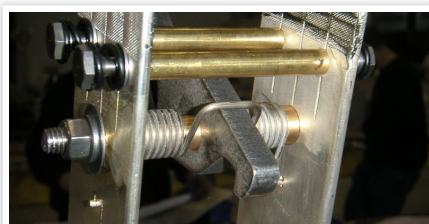
NO CASTINGS

 PDF DATASHEET



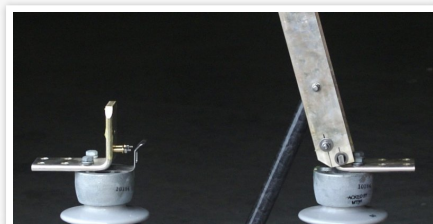
### TECHNICAL FEATURES

- ✓ High strength aluminum or galvanized steel base frame;
- ✓ Hardware on live parts are made of non-magnetic materials (mainly stainless steel);
- ✓ Current-carrying parts are made of high-conductivity copper;
- ✓ Contacts are made of silver plated hard drawn copper;
- ✓ Contact pressure is provided through multiple spring loaded fingers.



### CUT VIEW OF LATCH

- ✓ Heavy-duty latch spring protected from ice buildup with the terminal pad when closed.



### OPTIONAL AUXILIARY CONTACTS

- ✓ The EMSPEC hookstick switch can be fitted with four (4) auxiliary contacts for use in indoor substations or industrial environment.

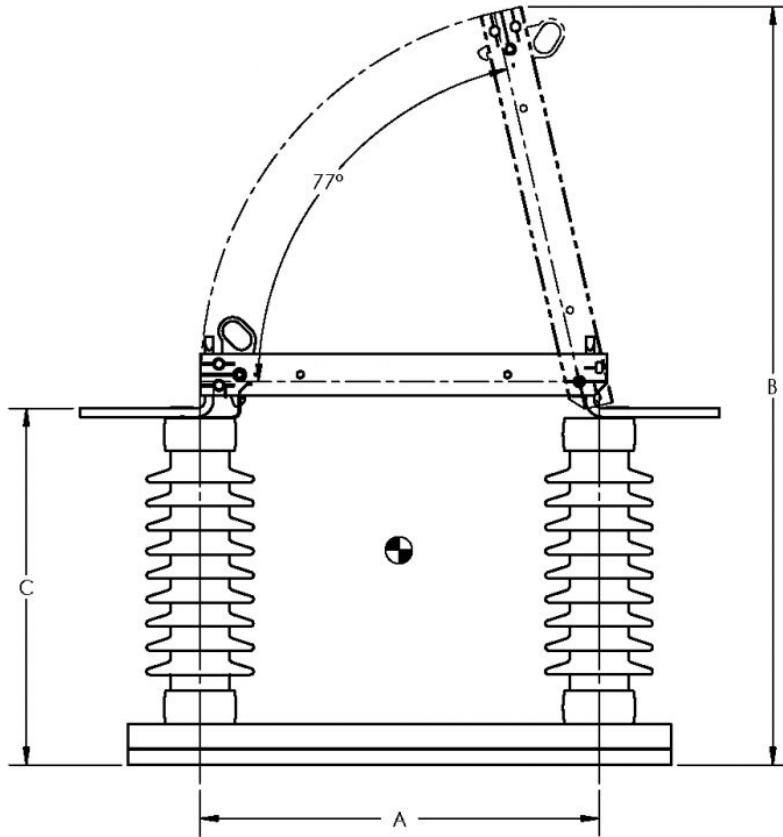
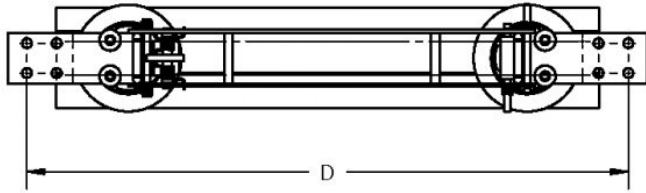
### VEE-TYPE FRAME

- ✓ Vee-type frames are optional. Please consult factory.

## HOOKSTICK SWITCH – HS17750

## DIMENSIONS & TECHNICAL DATA

✓ Dimensions based on ANSI TR insulators.



BIL (kV)	110	150	200	250	350	550
A	441	441	597	697	970	1455
B	781	882	1 136	1 335	1 836	2 710
C	331	433	534	636	841	1 247
D	744	744	900	1 000	1 273	1 758
In (A)	Up to 2 000	Up to 2 000	Up to 2 000	Up to 2 000	Up to 2 000	Up to 2 000
Icc (kA peak)	Up to 82	Up to 82	Up to 82	Up to 82	Up to 82	Up to 82

For other ratings consult factory

### OPTIONS

- ✓ Silicone or polymer insulators
- ✓ Auxiliary contacts
- ✓ Vee-type frame

*This brochure provides a brief introduction. EMSPEC reserves the right to make changes at any time, without notice.*

---